



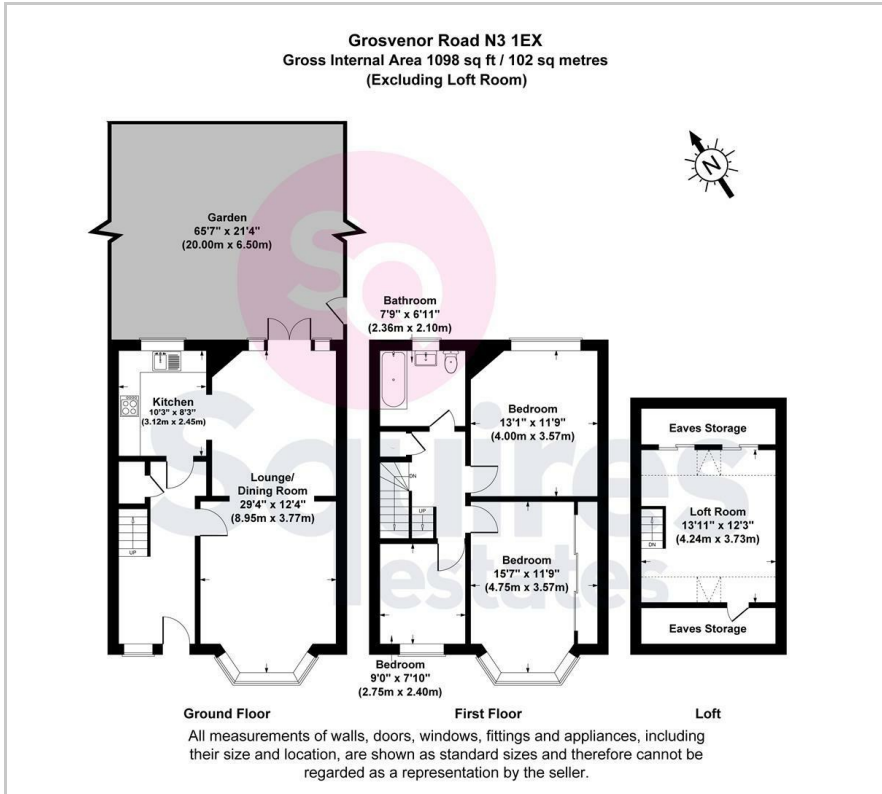
Grosvenor Road, London, N3 1EX

Offers In Excess Of £850,000 - Freehold

A 3 bedroom end-of-terrace house situated within this quiet turning off Nether Street and located only 0.5 miles from both Finchley Central and West Finchley Tube stations. The property features a 29ft through-reception room and benefits include a 15ft master bedroom with fitted wardrobes, a 65ft garden with side access and a loft room. The house is well located for Moss Hall Schools, St Mary's CE Primary School and Dollis Valley Greenwalk. With much scope to extend (subject to the necessary consents), the property would make an ideal family home.

- End-of-terrace
- 3 bedrooms
- 65ft garden with side access
- Loft room
- Potential to extend (stpp)
- Close to Tube stations
- Close to Moss Hall Schools
- Barnet council tax band E

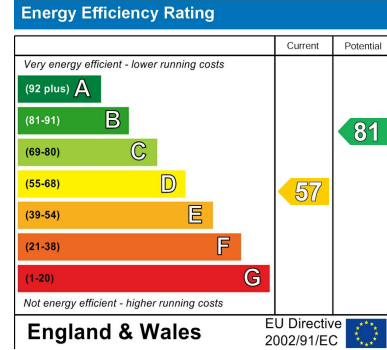
Floor Plan



Area Map



Energy Efficiency Graph



These particulars, whilst believed to be accurate are set out as a general outline only for guidance and do not constitute any part of an offer or contract. Intending purchasers should not rely on them as statements of representation of fact, but must satisfy themselves by inspection or otherwise as to their accuracy. No person in this firm's employment has the authority to make or give any representation or warranty in respect of the property.

Finchley Branch

181a Squires Lane,
Finchley,
London N3 2QS
Tel 020 8343 2111

Hendon Branch

16 Central Circus Parade,
Queens Road, Hendon,
London NW4 3AS
Tel 020 8202 0808

Mill Hill Branch

7 Thornfield Parade,
Holders Hill Road, Mill Hill,
London NW7 1LN
Tel 020 8349 3030

